

— BITUMINOUS OVERLAY



Sheet Title:
CITY OF HAM LAKE BITUMINOUS OVERLAY

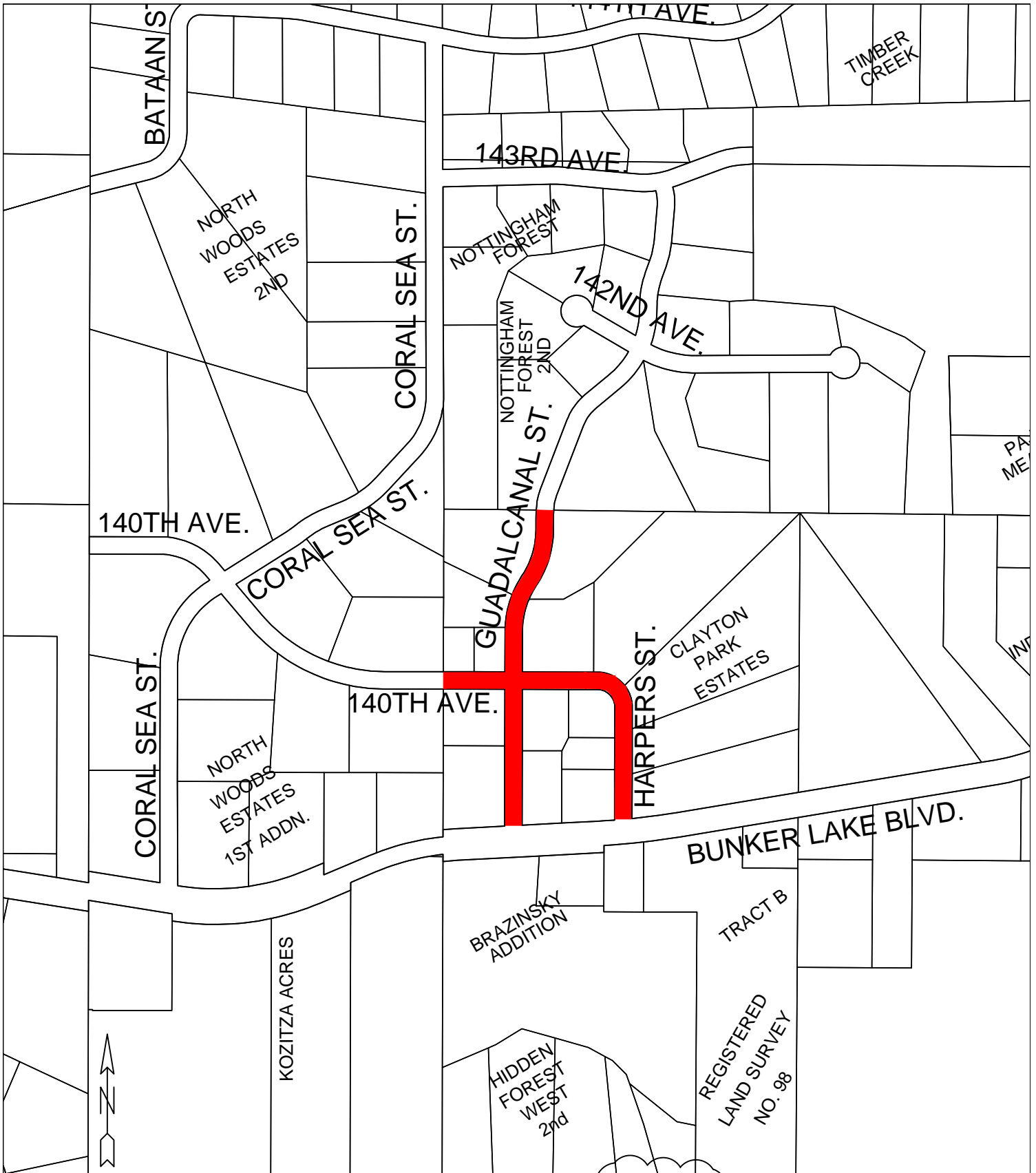
Date
12/9/25

Scale
1"=4,100'

Project:
OVERALL 2026 OVERLAY LOCATIONS

RFC ENGINEERING, INC.
Consulting Engineers

13635 Johnson Street
Ham Lake, MN 55304
Telephone (763) 862-8000
Fax (763) 862-8042



Sheet Title:
CITY OF HAM LAKE 2026 BITUMINOUS OVERLAY

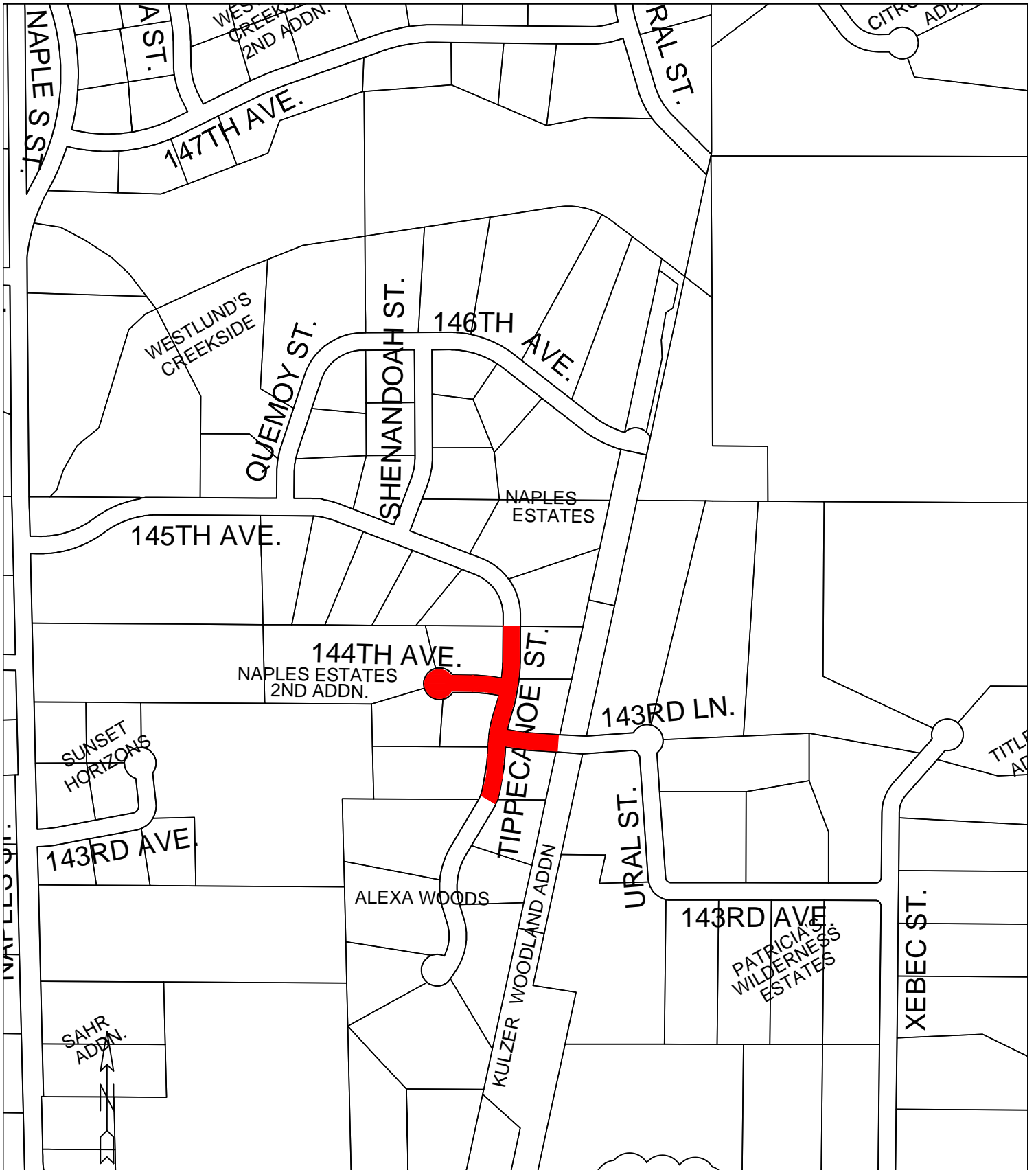
Locations:
CLAYTON PARK ESTATES

Date
12/9/25

Scale
1" = 500'

RFC ENGINEERING, INC.
Consulting Engineers

13635 Johnson Street
Ham Lake, MN 55304
Telephone (763) 862-8000
Fax (763) 862-8042



Sheet Title:
 CITY OF HAM LAKE 2026 BITUMINOUS OVERLAY

Locations:
 NAPLES ESTATES 2ND ADDITION

Date
 12/9/25

Scale
 1" = 500'

RFC ENGINEERING, INC.
Consulting Engineers

13635 Johnson Street
 Ham Lake, MN 55304
 Telephone (763) 862-8000
 Fax (763) 862-8042



Sheet Title:
CITY OF HAM LAKE 2026 BITUMINOUS OVERLAY

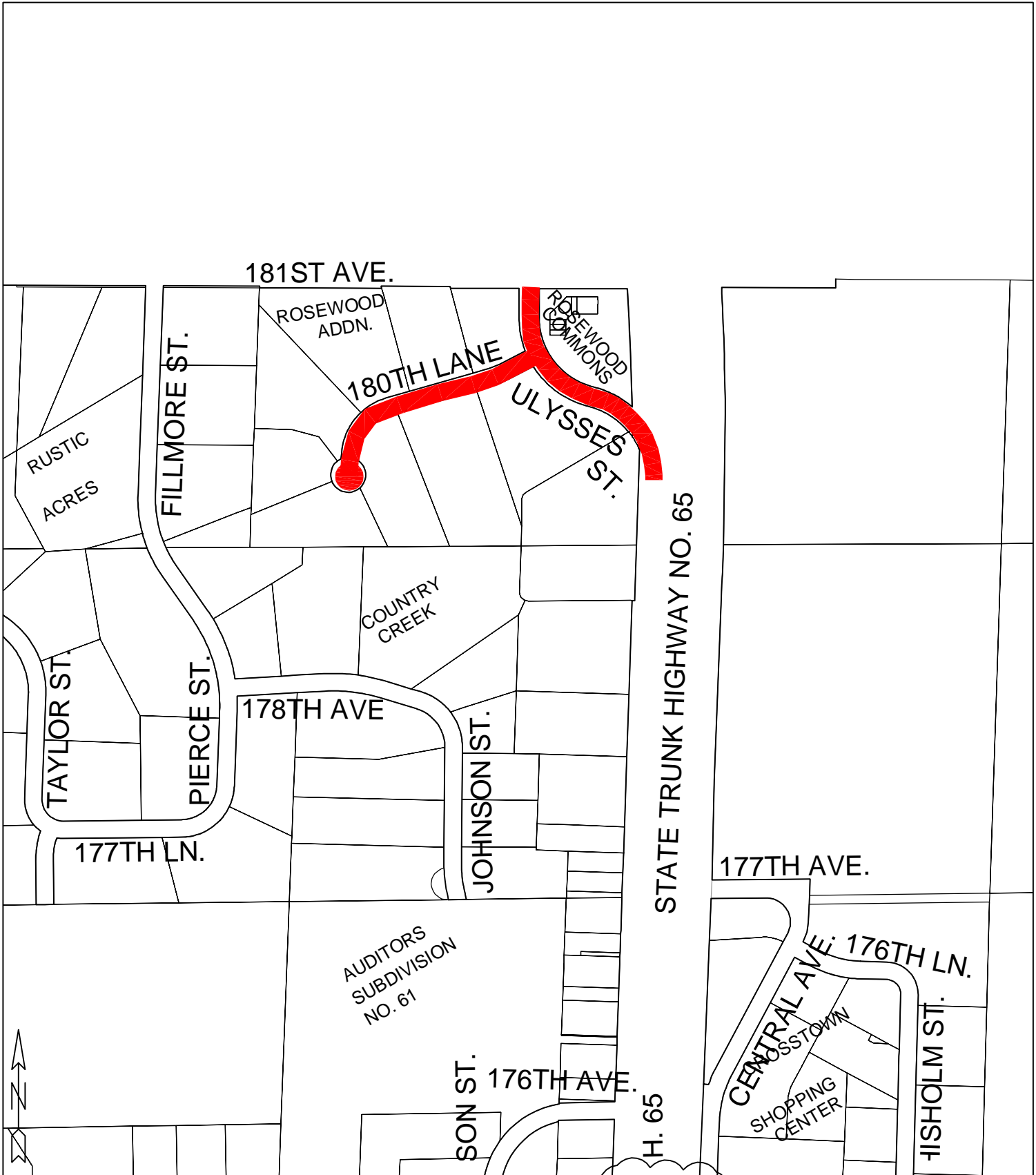
Date
12/9/25

Scale
1" = 500'

Locations:
POLK STREET

RFC ENGINEERING, INC.
Consulting Engineers

13635 Johnson Street
Ham Lake, MN 55304
Telephone (763) 862-8000
Fax (763) 862-8042



Sheet Title:
CITY OF HAM LAKE 2026 BITUMINOUS OVERLAY

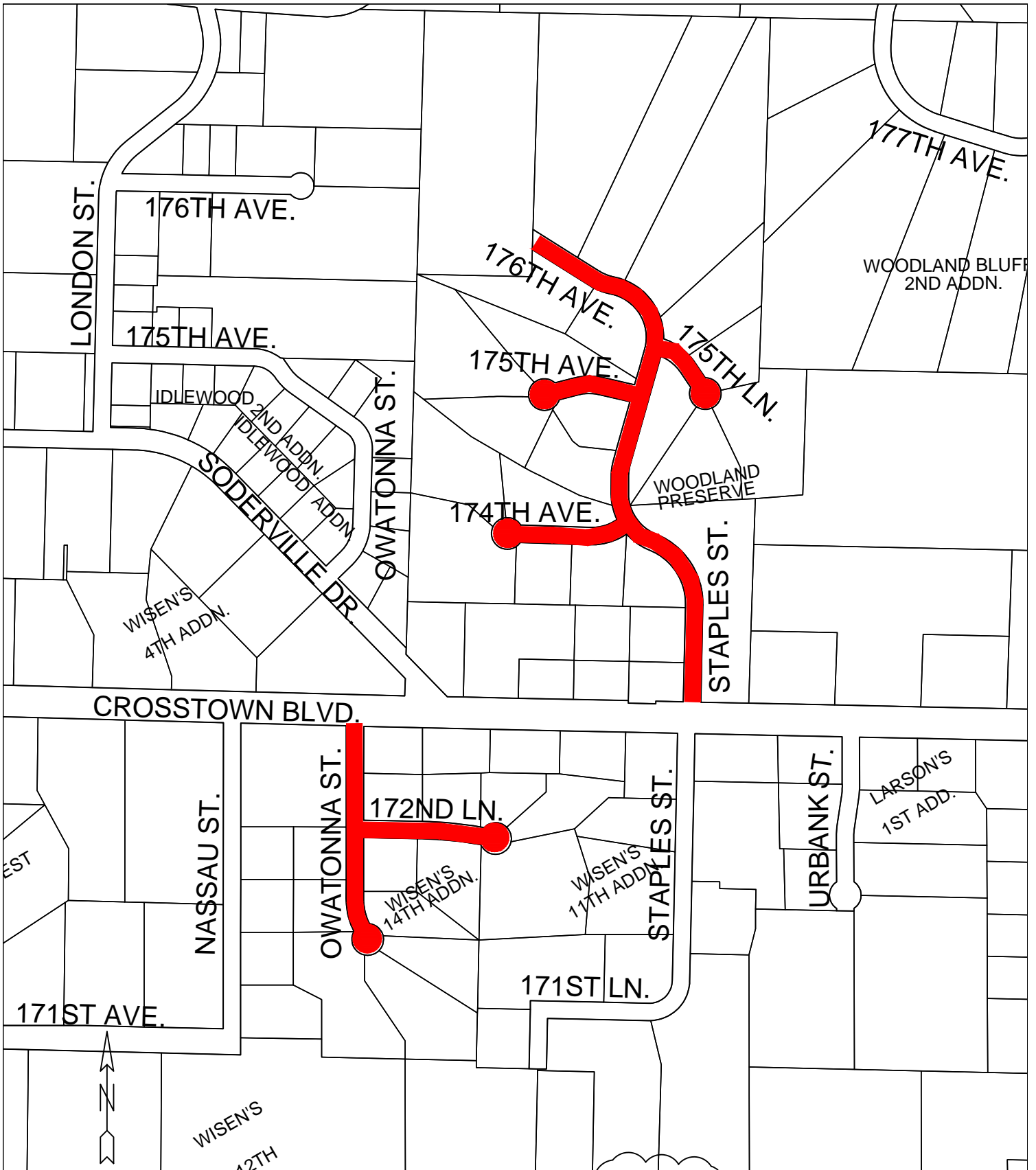
Locations:
ROSEWOOD ADDITION

Date
12/9/25

Scale
1" = 500'

RFC ENGINEERING, INC.
Consulting Engineers

13635 Johnson Street
Ham Lake, MN 55304
Telephone (763) 862-8000
Fax (763) 862-8042



Sheet Title:
 CITY OF HAM LAKE 2026 BITUMINOUS OVERLAY

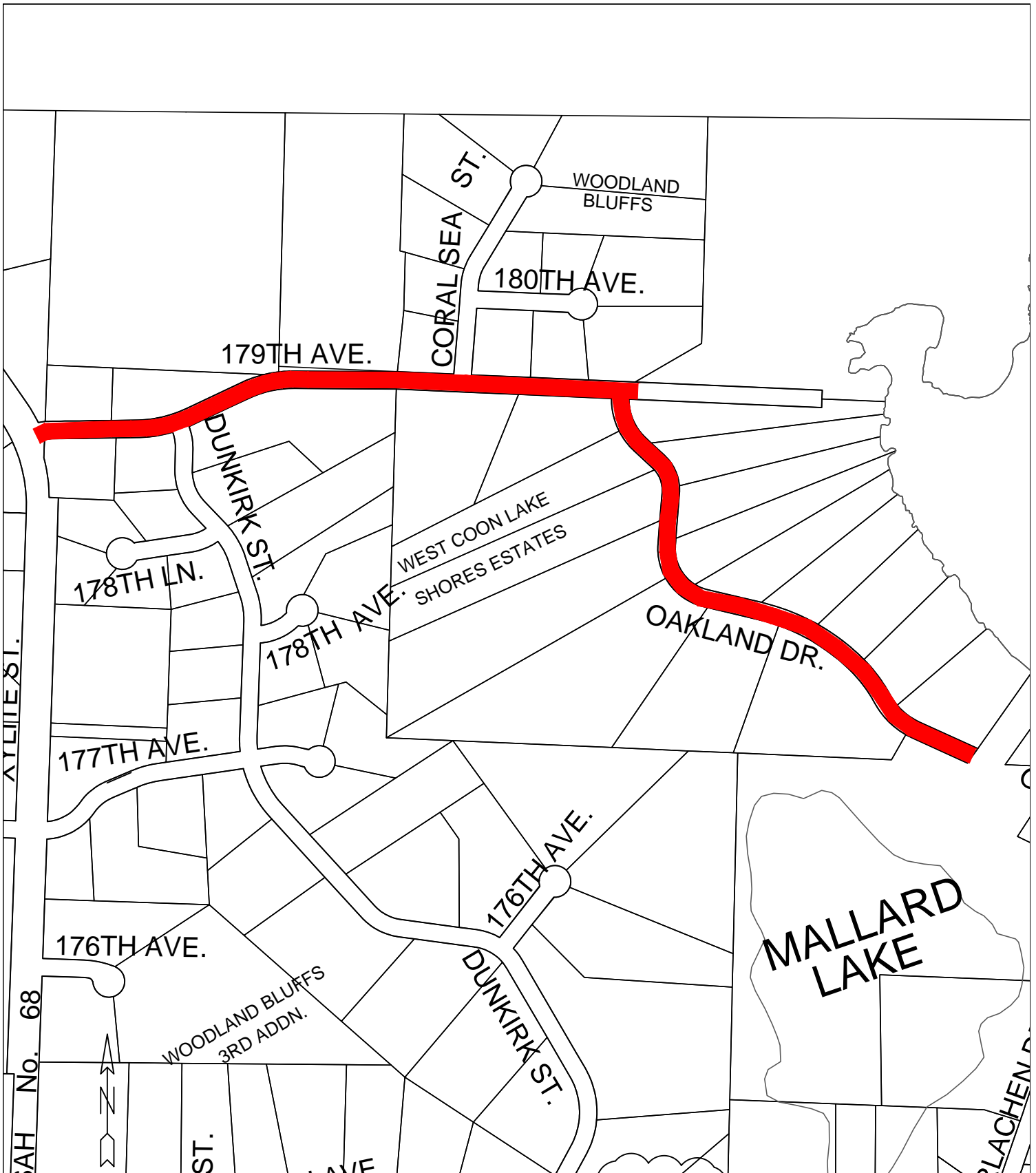
Locations:
 WISEN'S 14TH ADDITION AND WOODLAND PRESERVE

Date
 12/9/25

Scale
 1" = 500'

RFC ENGINEERING, INC.
Consulting Engineers

13635 Johnson Street
 Ham Lake, MN 55304
 Telephone (763) 862-8000
 Fax (763) 862-8042



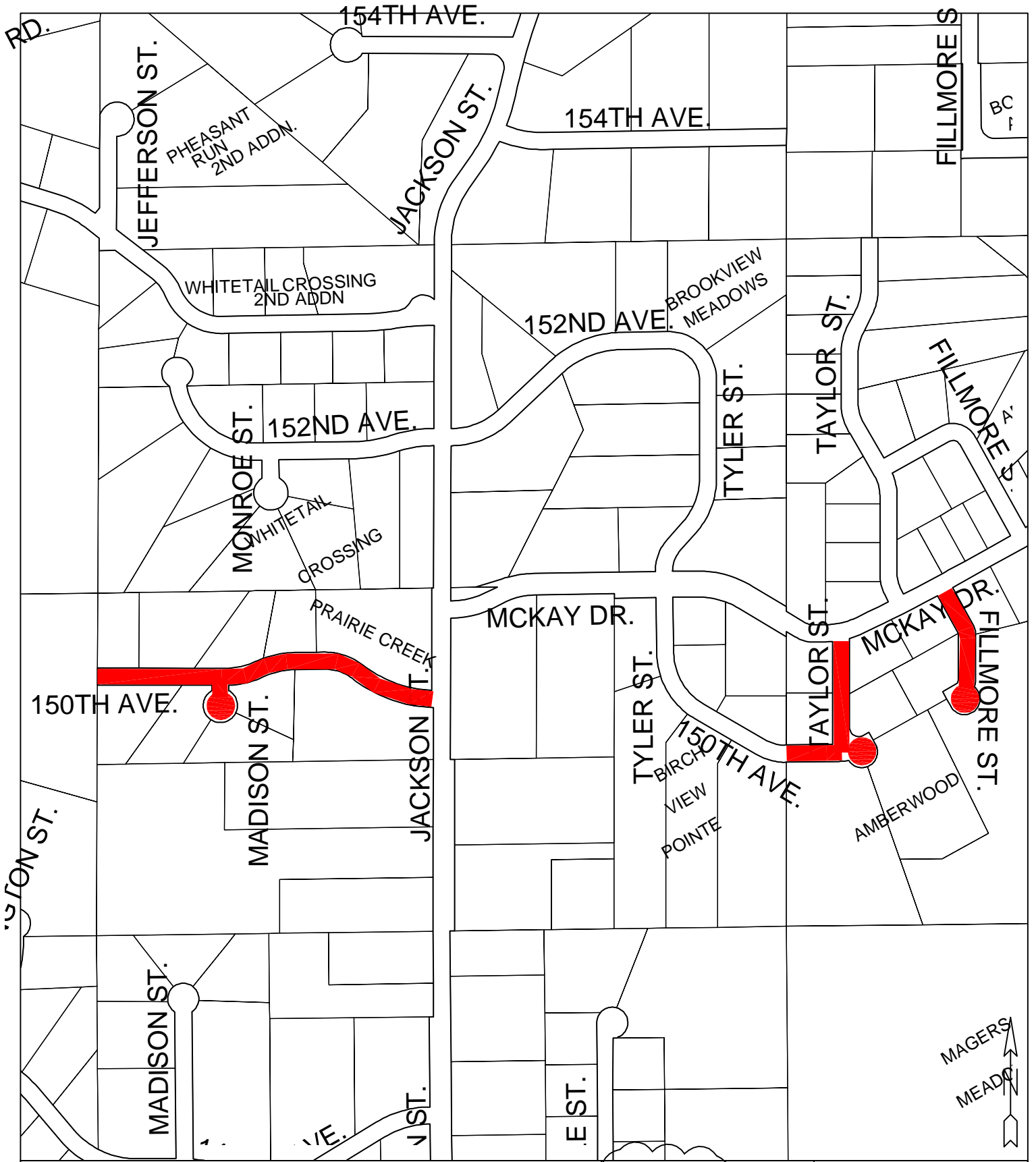
Sheet Title:
 CITY OF HAM LAKE 2026 BITUMINOUS OVERLAY

Date
 12/9/25

Scale
 1" = 500'

Locations:
 WEST COON LAKE SHORES ESTATES

RFC ENGINEERING, INC.
Consulting Engineers
 13635 Johnson Street
 Ham Lake, MN 55304
 Telephone (763) 862-8000
 Fax (763) 862-8042



Sheet Title:
CITY OF HAM LAKE 2026 BITUMINOUS OVERLAY

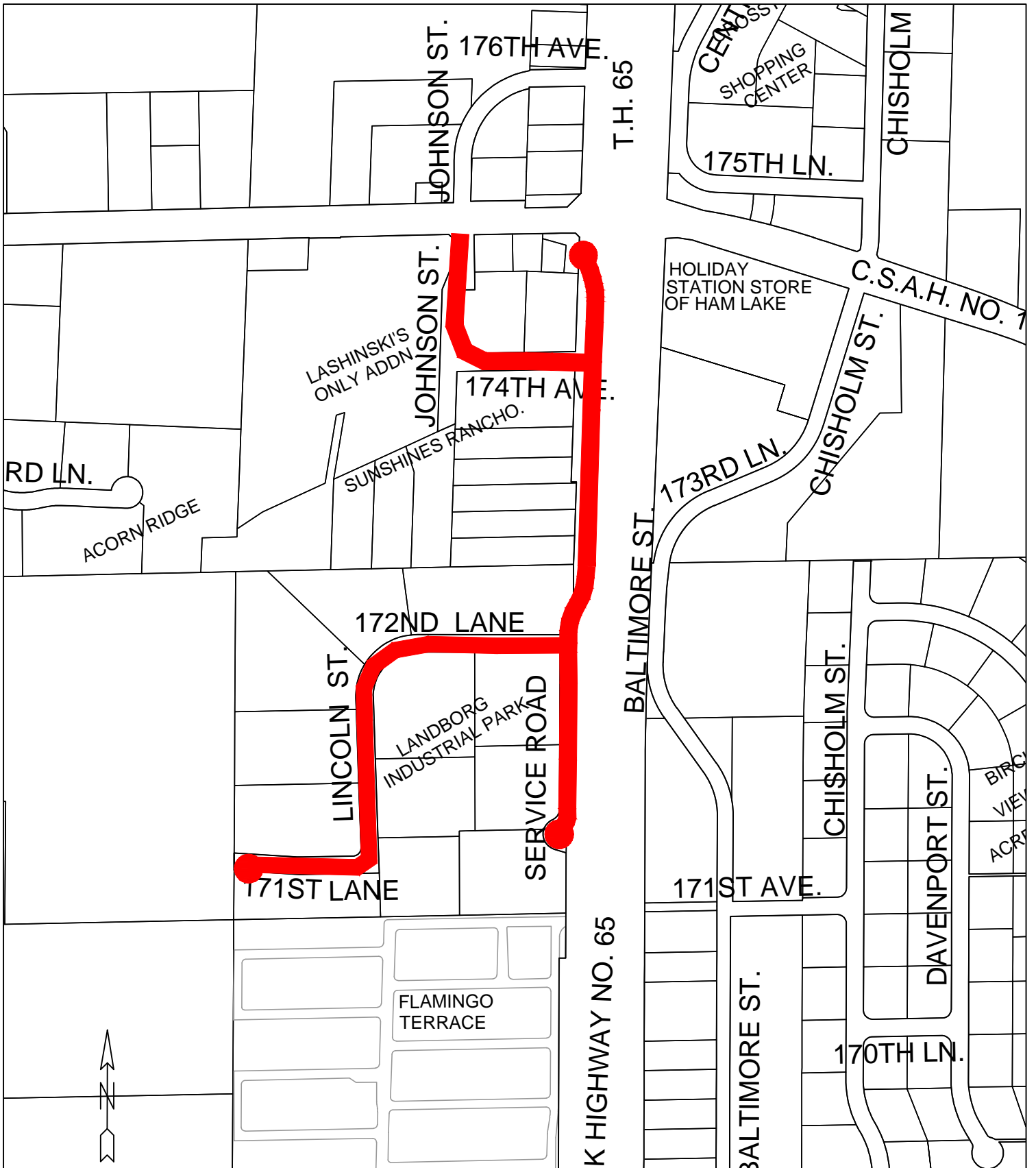
Locations:
AMBERWOOD AND PRAIRIE CREEK

Date
12/9/25

Scale
1" = 500'

RFC ENGINEERING, INC.
Consulting Engineers

13635 Johnson Street
Ham Lake, MN 55304
Telephone (763) 862-8000
Fax (763) 862-8042



Sheet Title:
CITY OF HAM LAKE 2026 BITUMINOUS OVERLAY

Date
12/9/25

Scale
1" = 500'

Locations:
LANDBORG INDUSTRIAL PARK &
JOHNSON ST. NE & ULYSSES ST. & 174TH AVE. NE

RFC ENGINEERING, INC.
Consulting Engineers

13635 Johnson Street
Ham Lake, MN 55304
Telephone (763) 862-8000
Fax (763) 862-8042